

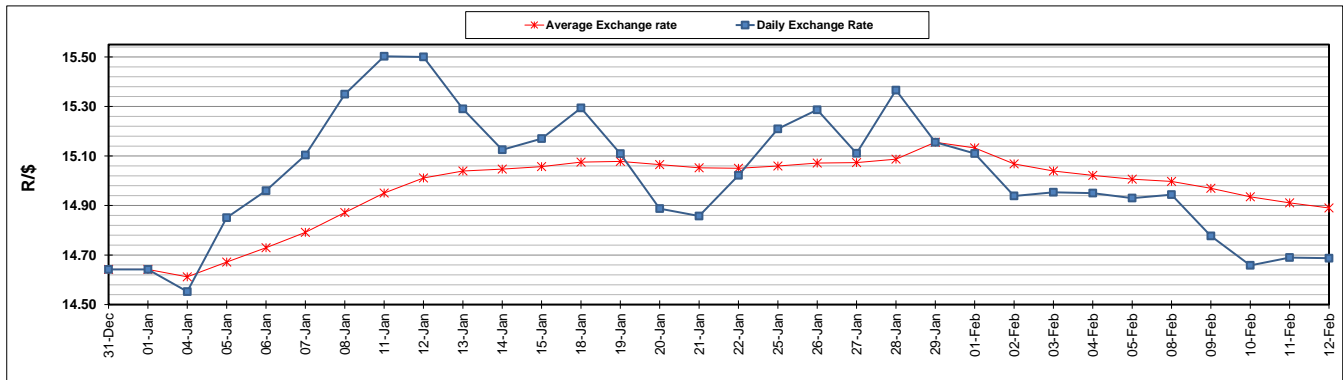
	PETROL 95 ULP	PETROL 93 ULP & LRP	DIESEL 0.05%	DIESEL 0.005%	ILL. PAR.
GAUTENG PUMP PRICE (SA c/l) AS FROM 03/02/2021	1,567.000	1,550.000	-	-	-
WHOLESALE PRICE (SA c/l) AS FROM 03/02/2021	-	-	1,358.420	1,360.820	798.688
SINGLE NATIONAL MAXIMUM RETAIL PRICE	-	-	-	-	1,008.000
BASIC FUEL PRICE - 12/02/2021 (SA c/l)	641.537	632.521	643.502	647.129	622.457
PRESS RELEASE CONTRIBUTION TO BFP 03/02/2021 - 12/02/2021 (SA c/l)	600.170	593.170	599.630	602.030	586.128
UNIT OVER/(UNDER) RECOVERY - 12/02/2021 (SA c/l)	(41.367)	(39.351)	(43.872)	(45.099)	(36.329)
AVERAGE BASIC FUEL PRICE 29/01/2021 - 12/02/2021	633.822	625.158	628.951	632.697	610.140
AVERAGE UNIT OVER/(UNDER) RECOVERY 29/01/2021 - 12/02/2021	(55.743)	(54.079)	(45.139)	(46.758)	(40.103)

ANALYSIS MOVEMENT OF AVERAGE OVER/(UNDER) RECOVERY

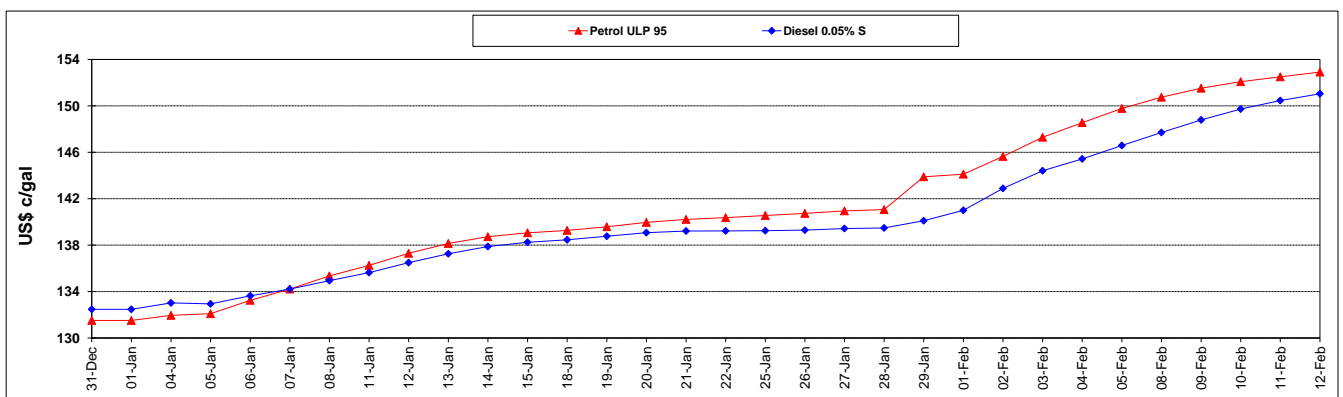
	PETROL 95	PETROL 93	DIESEL 0.05%	DIESEL 0.005%	ILL. PAR.
- MOVEMENT IN INTERNATIONAL PRODUCT PRICES	(64.120)	(62.341)	(53.452)	(55.120)	(48.167)
- MOVEMENT IN EXCHANGE RATE	8.377	8.262	8.313	8.362	8.064
AVERAGE UNIT OVER/(UNDER) RECOVERY 29/01/2021 - 12/02/2021	(55.743)	(54.079)	(45.139)	(46.758)	(40.103)

R/\$ EXCHANGE RATE - (R/\$14.6873 - 12/02/2021)

EXCHANGE RATE USED IN BASIC FUEL PRICE



INTERNATIONAL PRODUCT PRICES OF BASKET USED IN BASIC FUEL PRICE



BASIC FUEL PRICE IN SA CENTS PER LITRE

